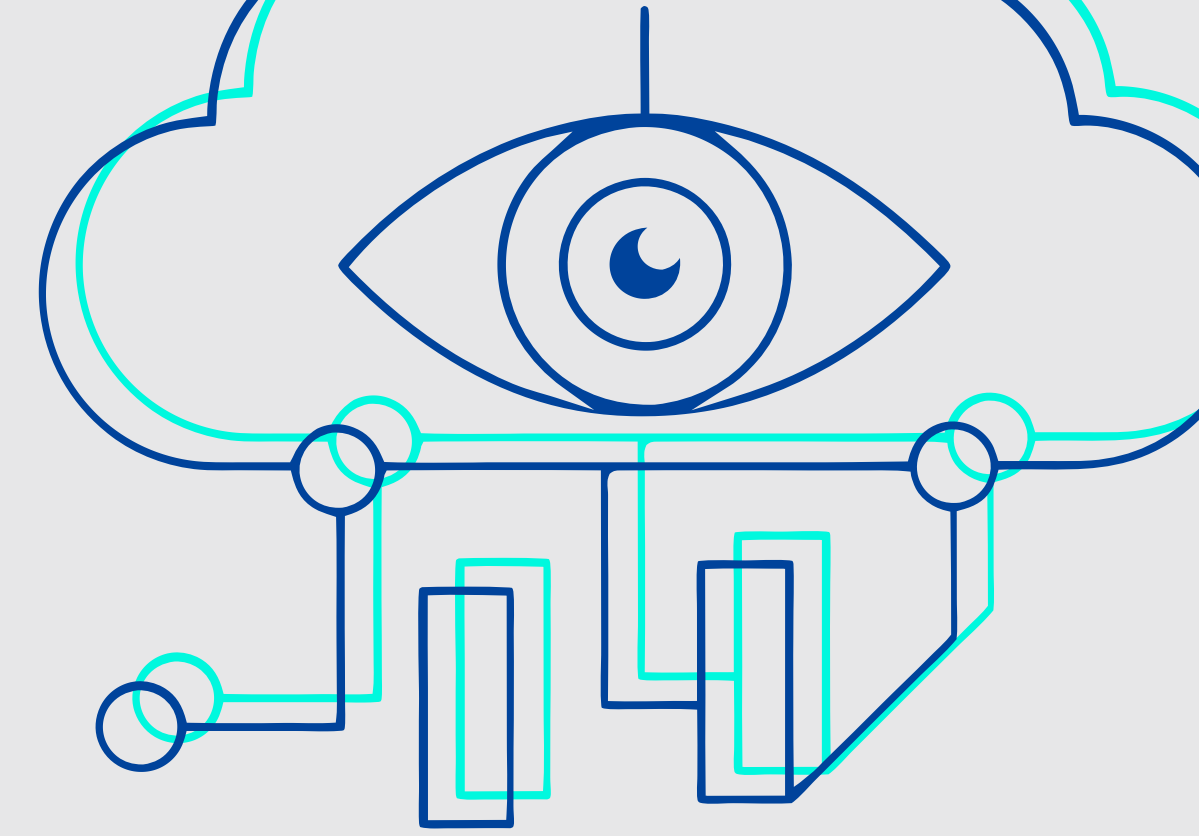


EFFICIENCY AND SAFETY MADE SMART

COOLCARE 4.0 intelligently advances system communication



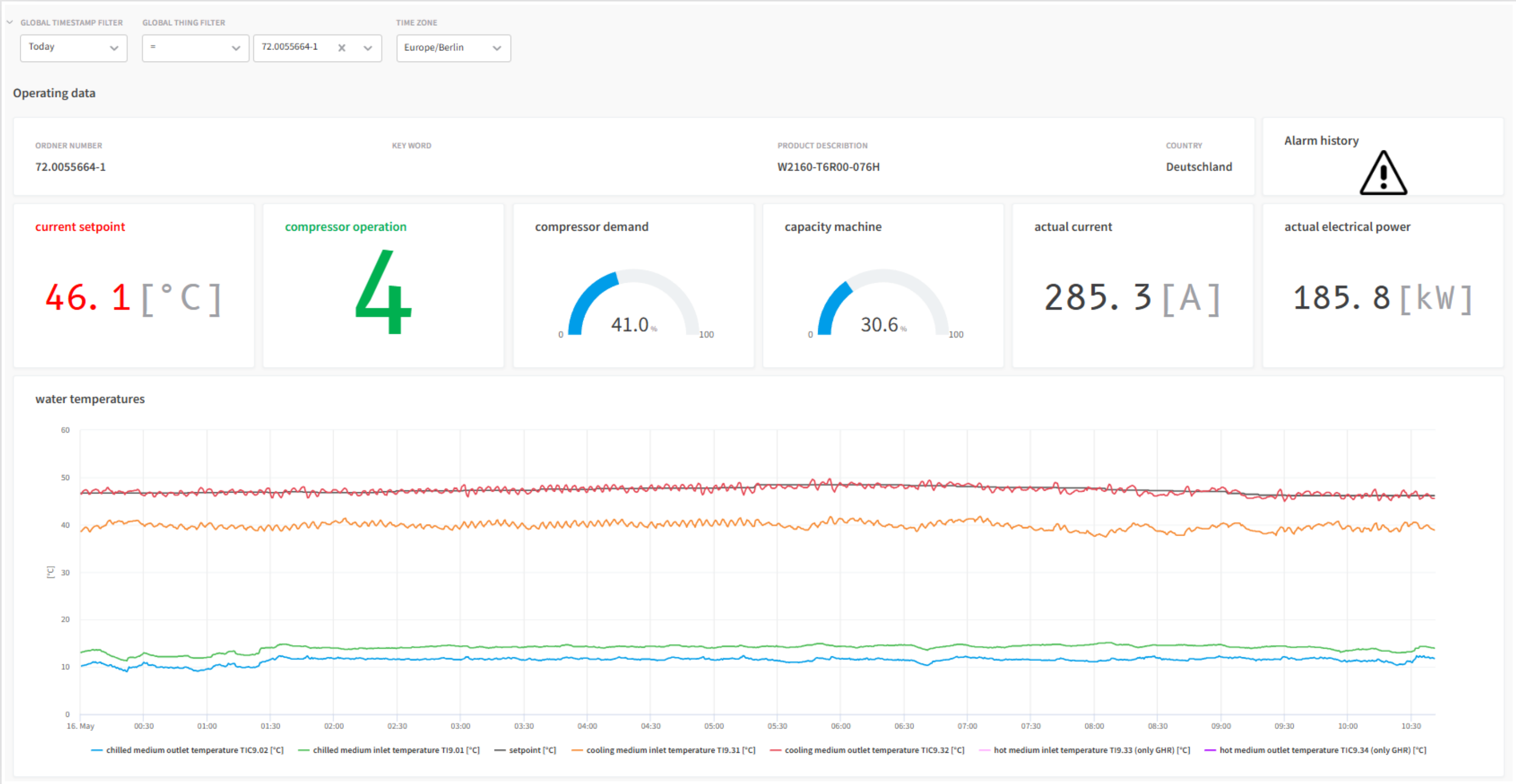
TABLE OF CONTENTS



One system, double the added value

DATA MONITORING:

Performance at a glance



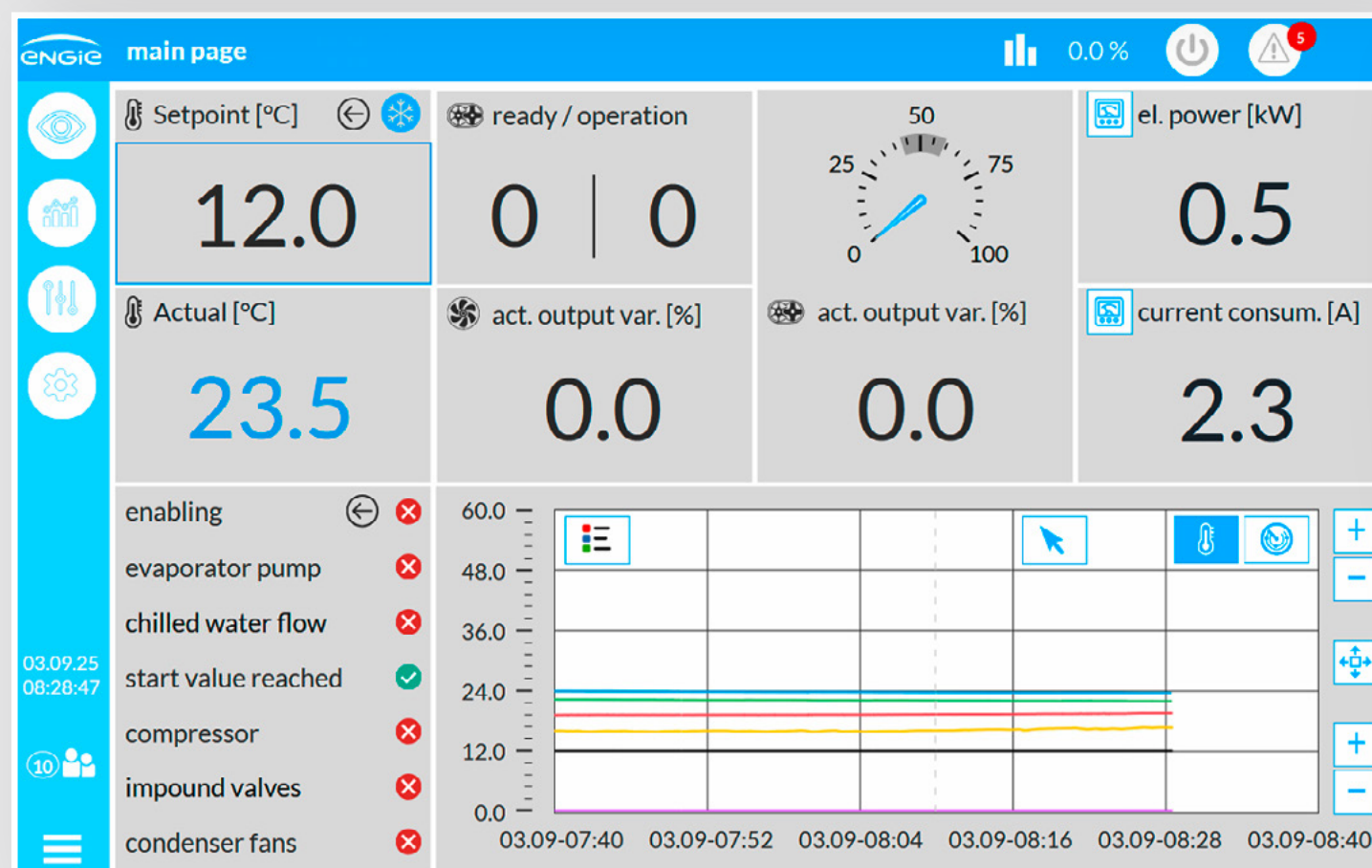
COOLCARE 4.0 comprehensively records operating data, statuses and alarms and evaluates them precisely.

With appealing and detailed visualisation in the cloud, our digital service within Digital Cloud Services helps you to better understand your chiller or heat pump.

The automatic forwarding of faults creates the basis for smooth operation.

REMOTE ACCESS:

Our solution thus paves the way for efficient remote maintenance and fault diagnosis – and keeps your machine operation on a safe track.



Connections						
Name	Connection Id	Local IP Address	Status	Ports		
IOT	68-0052001-1-iot	192.168.100.118	● Online	HTTP	VNC	SSH
SPS	68-0052001-1-sps	192.168.100.111	● Online	HTTP		
TP	68-0052001-1-tp	192.168.100.112	● Online		VNC	

Key features of COOLCARE 4.0

READY FOR MULTIPLE APPLICATIONS

Innovative online platform for
data monitoring – 24/7, 365
days a year

1

Recording and analysis of
machine data, statuses and
alarms

2

Real-time data monitoring
and alarm history

3

Alarm management with
automatic fault notifications by
e-mail

4

**Secure remote access to
machines** (only for authorised
ENGIE Refrigeration or partner
personnel)

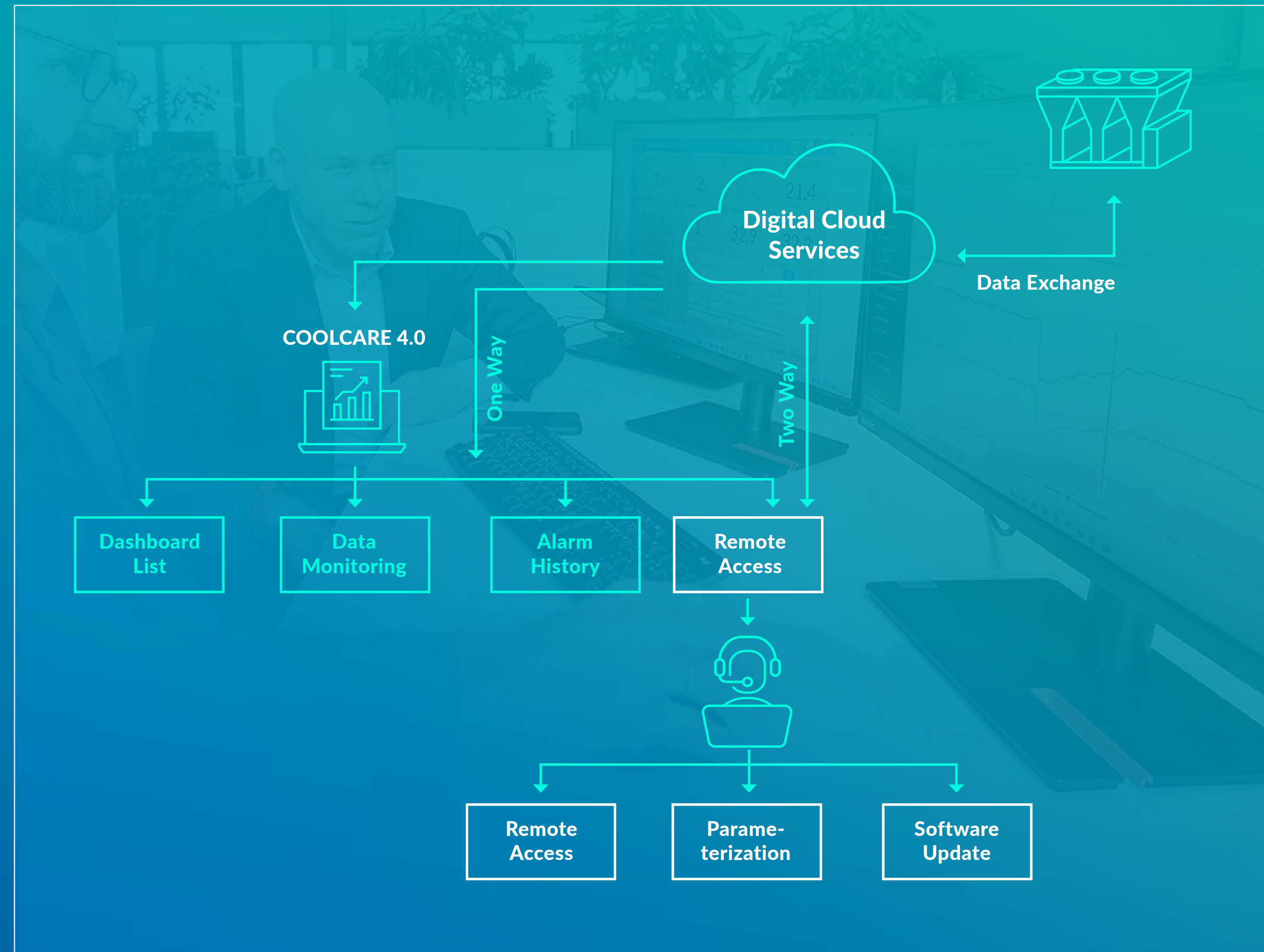
5

The concept behind COOLCARE 4.0

SIMPLY INGENIOUS!

Our application collects machine data, statuses and alarms in the cloud, transforms them into valuable information and makes them usable for your processes.

COOLCARE 4.0 enables access to the touch panel and the machine control system. This supports our service personnel in efficient troubleshooting, commissioning and installing updates.



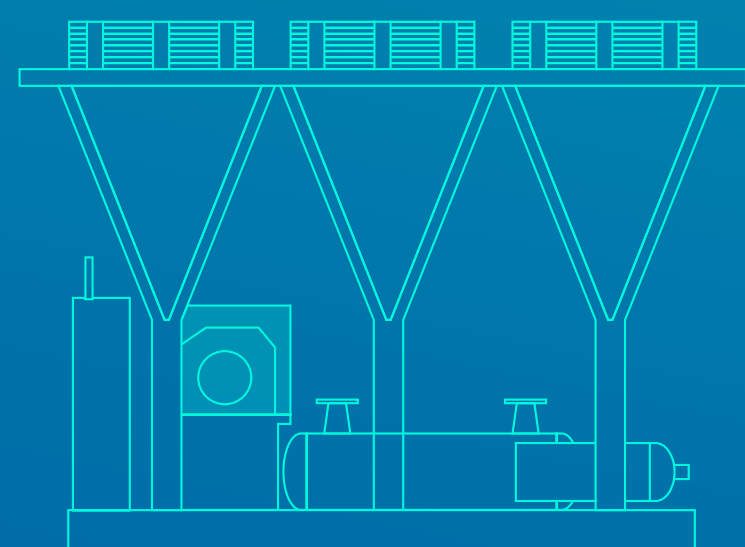
Ready for COOLCARE 4.0?

YOUR MACHINE IS.

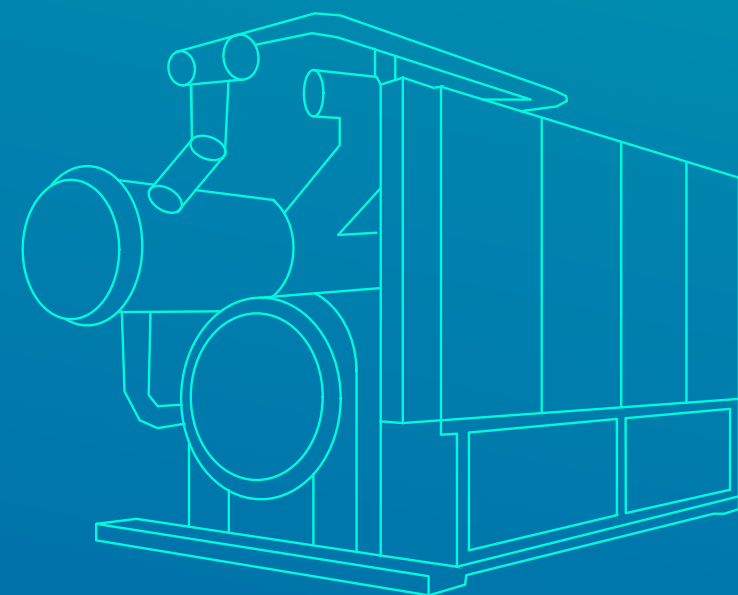
Our team of experts developed COOLCARE 4.0 specifically for our chillers and heat pumps.

The hardware required for connection to COOLCARE 4.0 is already included ex works in most models of the current generation.

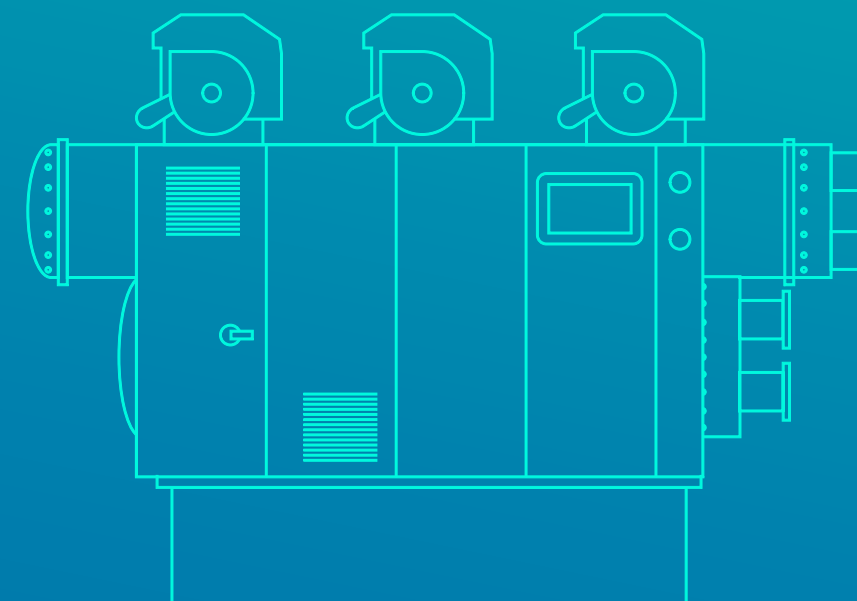
QUANTUM Air 4.1



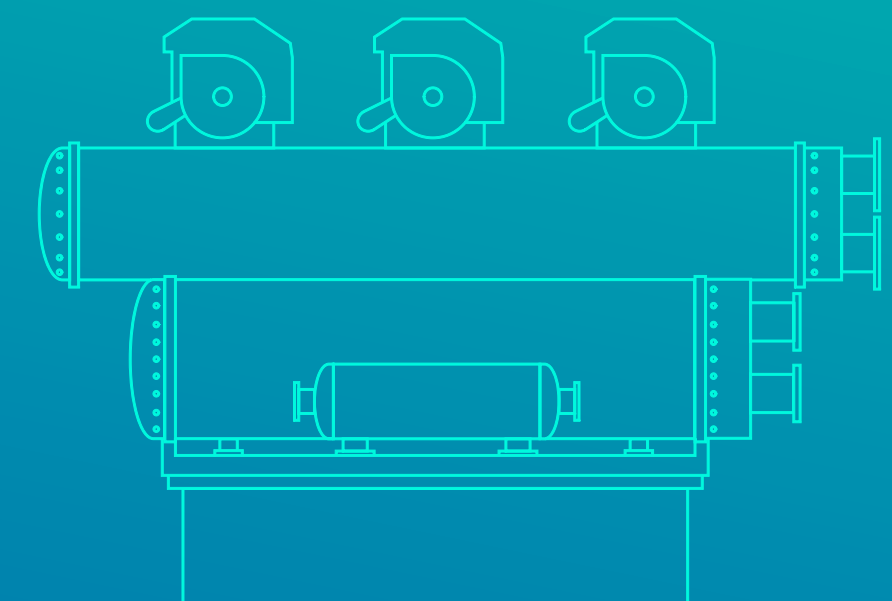
QUANTUM Water 4.0



SPECTRUM SPH



SPECTRUM SPC



Is your chiller or heat pump not technically up to date?



Don't worry, our service team will be happy to upgrade your hardware!

COOLCARE 4.0 impresses in many ways!

YOUR ADVANTAGES AT A GLANCE

Cost reduction

through fewer service calls and reduced machine downtime thanks to faster response times



Operational reliability

thanks to 24/7 monitoring 365 days a year, which reduces machine downtime to a minimum



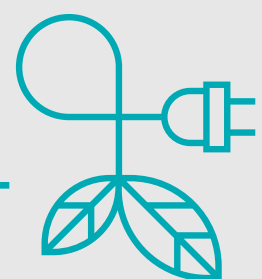
Transparency

with the help of real-time operating data collection – regardless of location and time



Sustainability

as COOLCARE 4.0 increases the efficiency of your cooling and heating solutions



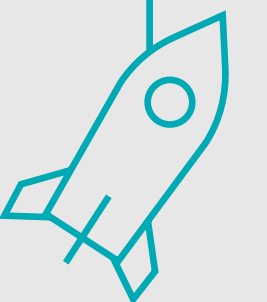
Comfort

through quick installation, intuitive dashboards and notifications



Speed

because our experienced service team responds quickly to any issues identified in the dashboard



Why COOLCARE 4.0 is completely secure

CYBER SECURITY COMES FIRST!

1

Our digital service has a **multi-client access system**.

This means that each user only sees the data and functions that are specified for them. User and group access is managed centrally by ENGIE Refrigeration administrators.

2

Monitoring does **not** involve **any personal data**.

Only technical machine data is processed.

This includes compressor data, control data and alarms.

3

COOLCARE 4.0 works via **remote access – securely and transparently**. This is because accesses and connections are visible in the log. The relevant data is stored in encrypted form and can only be viewed by administrators.

4

You can rely on **data security in the cloud!** COOLCARE 4.0 runs entirely in the Microsoft Azure Cloud. State-of-the-art encryption and security routines are used in accordance with the latest technology. Our top priority is to transport, store and process data securely.



"With the help of COOLCARE 4.0, we are supplementing the authentic expertise of our service technicians with intelligent functions. This enables us to meet our high service standards in terms of cost-effectiveness, operational reliability and efficiency. And I can reveal this much: we are constantly developing our digital cloud services for the future. You can look forward to new features that will pay off for you both ecologically and economically!"

Hans Born

Head of I&C at ENGIE Refrigeration

Looking for excellent service?

LOOK NO FURTHER. WE ARE HAPPY TO ADVISE YOU!

ENGIE Refrigeration ensures the right temperature in every process. Around the world, our heat pumps and chillers are synonymous with the highest level of technical expertise, economy, efficiency and sustainability.

Our mission: to support our customers with the best solutions on their path to climate neutrality. To this end, we focus on individual advice, tailor-made concepts and comprehensive services.

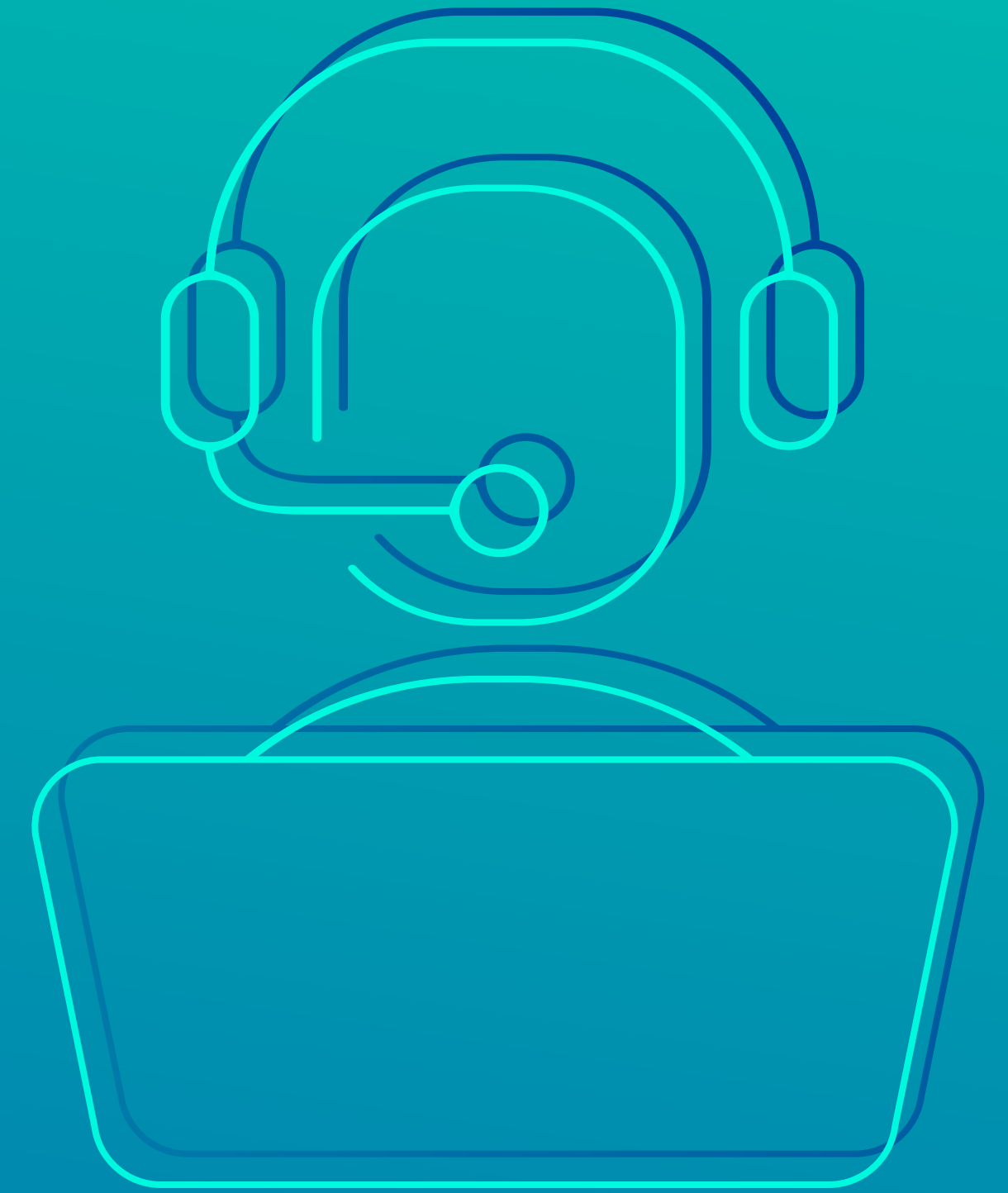
As part of the global ENGIE Group, we have access to a global network of specialists and can therefore implement cooling and heating solutions for you at the highest level, both nationally and internationally.

**The ENGIE Refrigeration team of experts
is here for you:**

National/International Service:

National/International Sales:

With eleven branches and around 130 service technicians, we are close to you throughout Germany and available around the clock:



ENGIE Refrigeration GmbH | Josephine-Hirner-Str. 1 & 3, 88131 Lindau am Bodensee, Germany | T + 49 8382 706-1 | F + 49 8382 706-410

[www.engie-refrigeration.com](#)